



**Now offering the first two years of your
Bachelor's Degree**



**Associate of Arts and
Associate of Science Degrees**

Arts and Science Pre-Baccalaureate Transfer Degrees

Planning Your Program

Arts and Science pre-baccalaureate transfer degrees are programs for students who wish to take the first two years of a four-year college program at Belmont Technical College.

Graduates of the Arts and Science pre-baccalaureate degree programs receive either the Associate of Arts (AA) or the Associate of Science (AS) degree. The Associate of Arts curriculum includes a slightly greater emphasis on the humanities, while the Associate of Science curriculum includes more mathematics and science course work. Both include the general education core requirements for baccalaureate degrees.

The Belmont Technical College state-wide transfer module (see page 125 of 2008/2009 Course Catalog) as well as courses approved for the state-wide transfer assurance guides are embedded in both the Associate of Arts and the Associate of Science pre-baccalaureate degrees to facilitate the successful transfer of courses between Belmont Technical College and other colleges and universities in Ohio. Most courses in both degree pathways will parallel courses offered in the freshman and sophomore years at a state four-year college or university.

Since students are required to complete specific course sequences and electives to earn degrees in Liberal Arts and Science, it is strongly recommended that planning the program of study should be completed in collaboration with an academic advisor.



Academic Advising:

Ms. Jane Black

Mon – Thurs:

Main Campus: 740-695-9500 (1025) 8:00-11:00 am

North Center: 740-942-2222 (2005) 1:00-6:00 pm

In Ohio: 1-800-423-1188 (toll free)

Associate of Arts Degree

The Associate of Arts Degree is designed to prepare students for transfer to most four-year colleges or universities and is the equivalent of the freshman and sophomore years of a Bachelor of Arts Degree program, which includes programs of study such as English, history, social sciences, and other areas.

For students who have not yet decided upon an interest in one area of study, the Associate of Arts Degree provides a broad knowledge of liberal arts. Liberal arts elective courses give the student the flexibility to choose from a number of transferable courses.

The Associate of Arts Degree requires a minimum of 94 quarter credit hours for graduation. These hours are composed of a minimum of 54 hours of general education courses and enough electives to complete the 94-hour requirement, unless an area of concentration is desired. In that case, a minimum of 16 quarter credit hours in the concentration is required, plus enough electives to complete the 94-hour requirement. **Belmont Technical College will have concentrations available in the future.**

The general education or liberal arts courses (in the State Transfer Module) in the areas of English, arts and humanities, mathematics, natural and physical sciences, and in the social and behavioral sciences are listed on page 125 of the College Catalog. These courses may also meet the state-wide **transfer module** requirements and/or the state-wide **transfer assurance guides**.

Students are encouraged to discuss their transfer intentions with a representative of the college academic advising team early in their Belmont Technical College experience to assure that the correct courses are selected at Belmont Technical College to meet the specific requirements of the receiving college or university.

More information about the Associate of Arts Degree program may be obtained by contacting:

Ms. Jane Black, Advisor
Main Campus: 740-695-9500 (1025)
North Center: 740-942-2222 (2005)
In Ohio: 1-800-423-1188 (toll free)



Belmont Technical College recognizes the important connection between student success and academic preparedness. Depending upon the placement scores and/or equivalent college course work, students may be required to complete Transitional Studies courses before enrolling in the college-level courses of this program.

Course selections may be made from any courses listed on the next page.

Associate of Arts General Course Elective Information

Course Category, Code & Number	Course Name	Credit Hours
English (8 credit hours)		
ENG101	Composition I	4
ENG102	Composition II	4
ENG103	Business Communications	3
ENG104	Technical Writing	3
Mathematics (4 hours required)		
MAT118	Statistics II	4
MAT132	Pre-Calculus	5
MAT225	Calculus I	4
MAT226	Calculus II	4
MAT227	Calculus III	4
MAT231	Linear Algebra	4
MAT241	Finite Math	4
Natural & Physical Sciences (12 hours required and one sequence required with labs)		
Biology		
ANP101	Anatomy & Physiology I	4
ANP102	Anatomy & Physiology II	4
BIO100	Principles of Biology	4
BIO101	Human Biology I	5
BIO102	Human Biology II	5
BIO103	Microbiology	5
Chemistry		
CHM101	Chemistry Principles I	4
CHM102	Chemistry Principles II	4
Physics		
PHY101	Physics I	4
PHY102	Physics II	4
NSC101	Physical Science I	4
NSC102	Physical Science II	4
Social & Behavioral Sciences (16 hours required. Choose 8 hours from at least 2 areas listed below, plus an additional 8 hours)		
Economics / Business /Political Science		
ECN101	Macroeconomics	4
ECN102	Microeconomics	4
BUS241	Business Law	3
POL201	American National Government	4
POL202	State and Local Government	4
Psychology		
PSY105	General Psychology	4
PSY110	Human Development	4
PSY113	Theories of Personality	4
PSY205	Abnormal Psychology	4
PSY221	Social Psychology	4

Associate of Arts General Course Elective Information

Course Category, Code & Number	Course Name	Credit Hours
Sociology		
ANT223	Cultural/Social Anthropology	4
SOC101	Sociology	4
SOC121	Social Problems	4
SOC231	Criminology	4
SOC245	Juvenile Delinquency	4
Arts & Humanities (20 hours required Choose 12 hours from at least 2 areas listed below, plus an additional 8 hours.)		
History		
HIS101	Western Civilization I	4
HIS102	Western Civilization II	4
HIS103	Eastern Civilization I	4
HIS104	Eastern Civilization II	4
HIS105	History of American Architecture I: Native American to 1865	4
HIS110	History of American Architecture II: 1865 to Present	4
HIS201	American History I	4
HIS202	American History II	4
Literature		
ENG200	Introduction to Literature	4
ENG201	Survey of British Literature I	4
ENG202	Survey of American Literature I	4
ENG203	Fantasy Worlds	4
ENG205	Classics of World Literature I	4
ENG206	Classics of World Literature II	4
Music		
MUS101	Music Appreciation	4
Philosophy		
PHL210	Philosophy	4
PHL212	Ethics	4
Communications (4 hours required)		
COM105	Speech	4
Computer Competency (4 hours required)		
CPT111	Introduction to Computers	4
Freshman Experience (3 hours required)		
PSY104 (non-transferable)	Student Learning & Success	3

Associate of Arts Degree General Degree Suggested Course Sequence

FALL QUARTER			15-16
PSY104	Student Learning and Success	3	
CPT111	Introduction to Computers	4	
ENG101	Composition I	4	
	Natural Science Elective	4-5	
WINTER QUARTER			16-17
ENG102	Composition II	4	
	Arts & Humanities Elective (HIS101 Western Civilization I recommended)	4	
	Natural Science Elective	4-5	
	Free Elective**	4	
SPRING QUARTER			16
	Arts & Humanities Elective (COM105 Speech recommended)	4	
	Social & Behavioral Science Elective (PSY105 General Psychology recommended)	4	
	Arts & Humanities Elective (ENG200 Introduction to Literature recommended)	4	
	Arts & Humanities Elective (HIS102 Western Civilization II recommended)	4	
FALL QUARTER			16-18
	Social & Behavioral Science Elective (SOC101 Sociology recommended)	4	
	Math Elective	4-5	
	Natural Science Elective	4-5	
	Arts & Humanities Elective (PHL210 Philosophy recommended)	4	
WINTER QUARTER			16-18
	Arts & Humanities Elective	4	
	Social & Behavioral Science Elective	4	
	Free Electives	8-10	
SPRING QUARTER			16-18
	Social & Behavioral Science Elective (PSY110 Human Development recommended)	4	
	Free Electives**	12-14	
Total Credit Hours			94-102

**** Free electives at Belmont Technical College may be used to fulfill four- year institutional division prerequisite requirements. Free electives may be selected from any college-level course offered by BTC including technical or other general education courses. Consultation with an advisor is critical to ensure you are choosing the correct free electives that will transfer into the junior and senior years of your four-year program of study.**



Main Campus: 740-695-9500 (1025)
North Center: 740-942-2222 (2005)
In Ohio: 1-800-423-1188 (toll free)

Associate of Science Degree

The Associate of Science Degree is designed to prepare students for transfer to a four-year college or university and is the equivalent of the freshman and sophomore years of a Bachelor of Science Degree or related program, including engineering, business, or natural sciences. The degree is also suited for students who do not have a decided interest in one field of study. This concentration provides a broad knowledge of liberal arts, while emphasizing mathematics and science. Elective courses give the student the flexibility to choose from a number of transferable courses.

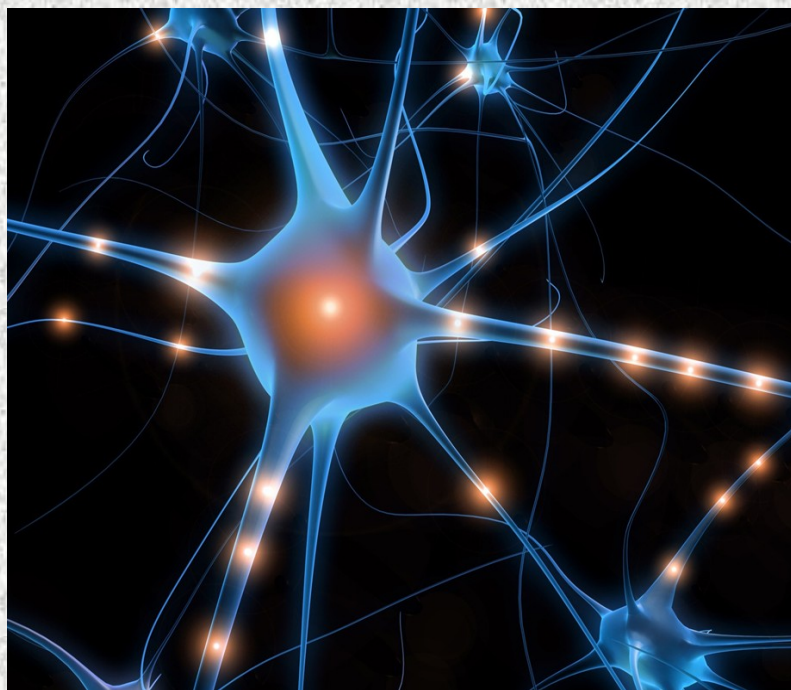
The Associate of Science Degree requires a minimum of 96 quarter credit hours for graduation. These hours are composed of a minimum of 54 hours of general education courses, and enough electives to complete the 96-hour requirement, unless an area of concentration is desired. In that case, a minimum of 16 quarter credit hours in the concentration is required plus enough electives to complete the 96-hour requirement. **Belmont Technical College will have concentrations available in the future.**

The general education courses (in the State Transfer Module) in the areas of English, arts and humanities, mathematics, natural and physical sciences, and in the social and behavioral sciences are listed on page 125 of the College Catalog. These courses may also meet either the state-wide **transfer module** requirements or the state-wide transfer assurance guides.

Students are encouraged to discuss their transfer intentions with a representative of the college academic advising team early in their Belmont Technical College experience to assure that the correct courses are selected at Belmont Technical College to meet the specific requirements of the receiving college or university.

More information about the Associate of Science Degree program may be obtained by contacting:

Ms. Jane Black, Advisor
Main Campus: 740-695-9500 (1025)
North Center: 740-942-2222 (2005)
In Ohio: 1-800-423-1188 (toll free)



Belmont Technical College recognizes the important connection between student success and academic preparedness. Depending upon the placement scores and/or equivalent college course work, students may be required to complete Transitional Studies courses before enrolling in the college-level courses in this program.

Course selections may be made from any of the courses listed on the next page.

Associate of Science General Course Elective Information

Course Category, Code & Number	Course Name	Credit Hours
English (8 credit hours)		
ENG101	Composition I	4
ENG102	Composition II	4
ENG103	Business Communications	3
ENG104	Technical Writing	3
Mathematics (8 hours required)		
MAT118	Statistics II	4
MAT132	Pre-Calculus	5
MAT225	Calculus I	4
MAT226	Calculus II	4
MAT227	Calculus III	4
MAT231	Linear Algebra	4
MAT241	Finite Math	4
Natural & Physical Sciences (16 hours required and one sequence required with labs)		
Biology		
ANP101	Anatomy & Physiology I	4
ANP102	Anatomy & Physiology II	4
BIO100	Principles of Biology	4
BIO101	Human Biology I	5
BIO102	Human Biology II	5
BIO103	Microbiology	5
Chemistry		
CHM101	Chemistry Principles I	4
CHM102	Chemistry Principles II	4
Physics		
PHY101	Physics I	4
PHY102	Physics II	4
NSC101	Physical Science I	4
NSC102	Physical Science II	4
Social & Behavioral Sciences (16 hours required. Choose 8 hours from at least 2 areas listed below, plus an additional 8 hours.)		
Economics/Business/Political Science		
ECN101	Macroeconomics	4
ECN102	Microeconomics	4
BUS241	Business Law	3
POL201	American National Government	4
POL202	State and Local Government	4
Psychology		
PSY105	General Psychology	4
PSY110	Human Development	4
PSY113	Theories of Personality	4
PSY205	Abnormal Psychology	4
PSY221	Social Psychology	4

Associate of Science General Course Elective Information

Course Category, Code & Number	Course Name	Credit Hours
Sociology		
ANT223	Cultural/Social Anthropology	4
SOC101	Sociology	4
SOC121	Social Problems	4
SOC231	Criminology	4
SOC245	Juvenile Delinquency	4
<hr/>		
Arts & Humanities (16 hours required Choose 8 hours from at least 2 areas listed below, plus an additional 8 hours).		
History		
HIS101	Western Civilization I	4
HIS102	Western Civilization II	4
HIS103	Eastern Civilization I	4
HIS104	Eastern Civilization II	4
HIS105	History of American Architecture I: Native American to 1865	4
HIS110	History of American Architecture II: 1865 to Present	4
HIS201	American History I	4
HIS202	American History II	4
Literature		
ENG200	Introduction to Literature	4
ENG201	Survey of British Literature I	4
ENG202	Survey of American Literature I	4
ENG203	Fantasy Worlds	4
ENG205	Classics of World Literature I	4
ENG206	Classics of World Literature II	4
Music		
MUS101	Music Appreciation	4
Philosophy		
PHL210	Philosophy	4
PHL212	Ethics	4
Communications (4 hours required)		
COM105	Speech	4
<hr/>		
Computer Competency (4 hours required)		
CPT111	Introduction to Computers	4
<hr/>		
Freshman Experience (3 hours required)		
PSY104 (non-transferable)	Student Learning & Success	3

Associate of Science Degree General Degree Suggested Course Sequence

FALL QUARTER			15-16
PSY104	Student Learning and Success	3	
CPT111	Introduction to Computers	4	
ENG101	Composition I	4	
	Natural Science Elective	4-5	
WINTER QUARTER			16
ENG102	Composition II	4	
	Arts & Humanities Elective (HIS101 Western Civilization I recommended)	4	
	Math Elective (MAT 131 recommended)	5	
	Social & Behavioral Science Elective (PSY105 General Psychology recommended)	4	
SPRING QUARTER			17
	Math Elective (MAT132 Pre-Calculus recommended)	5	
	Arts & Humanities Elective (HIS102 Western Civilization II recommended)	4	
	Social & Behavioral Science Elective (SOC101 Sociology recommended)	4	
	Arts & Humanities Elective (ENG200 Introduction to Literature recommended)	4	
FALL QUARTER			16-19
	Arts & Humanities Elective (COM105 Speech recommended)	4	
	Natural & Physical Science Elective or Math Elective	8-10	
	Free Elective**	4-5	
WINTER QUARTER			16-17
	Natural Science Elective	4-5	
	Social & Behavioral Science Elective	4	
	Free Electives**	8	
SPRING QUARTER			16-18
	Arts & Humanities Elective	4	
	Social & Behavioral Science Elective (PSY110 Human Development recommended)	4	
	Free Electives**	4	
Total Credit Hours			96-103

**** Free electives at Belmont Technical College may be used to fulfill four- year institutional division prerequisite requirements. Free electives may be selected from any college-level course offered by BTC including technical or other general education courses. Consultation with an advisor is critical to ensure you are choosing the correct free electives that will transfer into the junior and senior years of your four-year program of study.**



Main Campus: 740-695-9500 (1025)
North Center: 740-942-2222 (2005)
In Ohio: 1-800-423-1188 (toll free)